

second hand 2022 year Sany self-made chassis 10023 vehicle-mounted pump for sale from China

Our Product Introduction

for more products please visit us on hnhzmachinery.com

Basic Information

- Place of Origin: China
- Brand Name: SANY
- Model Number: SY5143THBF C10
- Minimum Order Quantity: 1 Unit
- Price: Negotiable
- Packaging Details: Container/Ro-Ro Ship/Bulk ship
- Delivery Time: 15work days
- Payment Terms: L/C,T/T
- Supply Ability: 10/unit/month

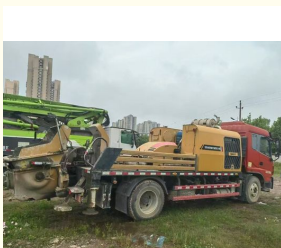


Product Specification

- Engine Power: 147 KW
- Equipment Volume: 100 M³/h
- Dimension: 9240*2500*3100mm
- Weight: 13500kg
- Year: 2022
- Chassis: YCS04200-68
- Concrete Press: 23Mpa
- Power Type: Diesel



More Images



Product Description

SANY 10023 SY5143THBF C10 Diesel Concrete Pump

Product Description:

Hunan zhongheng machinery second hand 2022 year Sany self-made chassis 10023 vehicle-mounted pump for sale from China

Features:

Product Name: Used Concrete Line Pump
Model:10023
Equipped with parking air conditioner
Rexroth main oil pump
Rexroth main oil pump
Volume around 20,000 cubic meters

Advantages of Sany vehicle-mounted pumps

High-efficiency performance:

Equipped with an upgraded main pump and an efficient pilot valve system, it achieves higher pumping pressure and faster pumping speed, improving work efficiency.

The pumping height is increased. For example, the pumping height of the same model of vehicle-mounted pump is increased by 50-80 meters compared with the original.

Wide applicability:

It has a variety of pumping methods and flexible pumping pipeline layout to adapt to different construction needs, such as high-rise buildings, bridges, tunnels, etc.

Stability and reliability:

Adopting advanced hydraulic control technology and automatic control system to ensure the stability, reliability and pumping accuracy of the equipment.

The vehicle-mounted chassis adopts a world-class automobile brand, with high stability and reliability, and can adapt to various complex road conditions and environments

Technical Parameters:

Engine Power	147 KW
Equipment volu	100 m/h
Dimension	9240*2500*3100mm
Weight	13500kg
Year	2022
Chassis	YCS04200-68
Concrete Press	23Mpa
Power Type	Diesel

Applications:

It has a variety of pumping methods and flexible pumping pipeline layout to adapt to different construction needs, such as high-rise buildings, bridges, tunnels, etc.
Stability and reliability:



Hunan Zhongheng Machinery Co., Ltd.



+8613657401111



shawn@hnhzmachinery.com



hnhzmachinery.com

Building B, Shijing International Plaza, Dongliu Road, Changsha Economic and Technological Development
Zone, Hunan Province