



2021 Second Hand Zoomlion Pump Truck ZLJ5442THBBE 59X-6RZ Cement Transport Equipment 59M For Sale

Our Product Introduction

for more products please visit us on hnhzmachinery.com

Basic Information

- Place of Origin: China
- Brand Name: ZOOMLION
- Model Number: ZLJ5442THBBE 59X-6RZ
- Minimum Order Quantity: 1 Unit
- Price: Negotiable
- Packaging Details: N/A
- Delivery Time: 10days
- Payment Terms: L/C,T/T
- Supply Ability: 10/unit/month

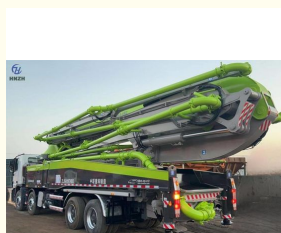


Product Specification

- Model: ZLJ5442THBBE
- Made Year: 2021
- Vertical Reach: 58.1m
- Reach Depth(m): 52.9
- Rotation: $\pm 270^\circ$
- Boom Section: 6
- Emission Standard: China Stage V
- Outrigger Span: 9540*13370*10870mm
- GVW: 54000Kg
- Max Output: 180m³/h
- Highlight: Second Hand Zoomlion Pump Truck,
2021 Zoomlion Pump Truck,
Cement Transport Equipment 59M



More Images



Product Description

Product Description:

Lingyun four-bridge long-arm pump truck.

After strict assessment by a professional dynamic load fatigue test bench, the fatigue life of the main structure of the boom/base frame has been verified to be 8 years or 450,000 cubic meters.

Through-axle design and external connecting rod design, small lateral shaking, high strength/rigidity, safe and reliable.

High-precision and high-efficiency pumping system uses a displacement sensor to constantly detect the position of the concrete piston.

The single-time discharge of a full cylinder is large, and the pumping efficiency is 5-8% higher than the industry.

The boom extension and retraction time is greatly shortened, 15% faster than the industry level, and the construction efficiency is high.

The 600L large-capacity fuel tank can meet the needs of large-scale construction at a time and has a long battery life. The engineering plastic water tank is equipped to prevent rust and corrosion, increase service life and save worry.

Integrate advanced digital technologies to accurately evaluate and monitor equipment health status, quickly detect equipment anomalies, and remotely resolve on-site problems.

Features:

Product Name: Used concrete boom pump

Number Of Axles: 4Axles

Model: ZLJ5442THBBE 59X-6RZ

Chassis: BENZ

Features: Truck-mounted Concrete Pump, Concrete Pump Truck, Used concrete boom pump, Zoomlion

Technical Parameters:

Product Attribute	Value
Product	Used concrete pump truck
Brand	ZOOMLION
Model	ZLJ5442THBBE 59X-6RZ
Chassis	Mercedes Benz
Machining Process	Hydraulic
Vertical Reach	58.1
Boom Section	6
Factory Location	Changsha, China
Made Year	2021
Drive mode	8*4
Emissionstandard	China stage5
GVW	44000Kg
Hydraulic System	Open
Output	180m³/h
Pump Pressure	11.3Mpa

Applications:

Water conservancy and hydropower, subways, bridges, large-scale infrastructure construction, high-rise buildings, foundation construction, etc.



Packing and Shipping:

Product Packaging:

The used concrete pump truck will be securely wrapped and packaged in a protective covering to prevent any damage during transport. All necessary components and accessories will be included and properly secured within the packaging.

Shipping:

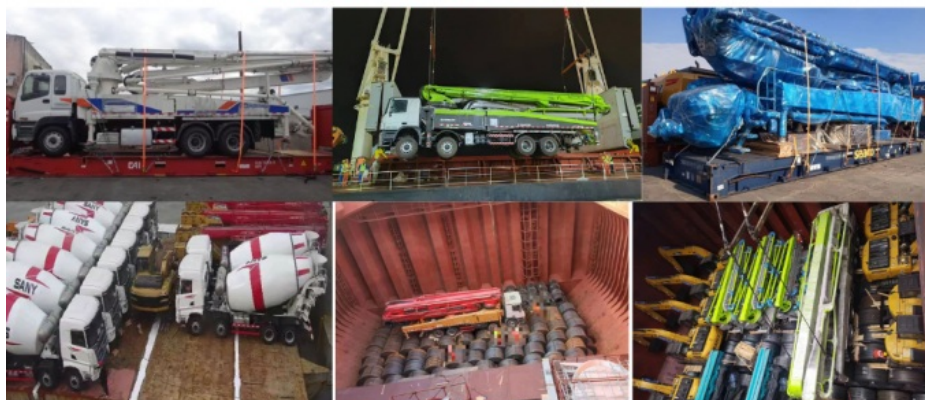
We offer both domestic and international shipping options for our used concrete pump truck.

Once your order is processed and confirmed, we will arrange for prompt shipment to your desired location.

Shipping fees will be calculated based on your location and will be added to your total purchase price at checkout.

Please allow for standard shipping times based on your location and shipping method selected.

SHIPPING PICTURES



FAQ:

Q: What is the brand name of this concrete pump truck?

A: The brand name of this concrete pump truck is ZOOMLION.

Q: What's the terms of payment?

A: 30% Advanced Payment T/T ,70% Balance Before Delivery To China Port .

Q: How to transport the pump truck to the address ?

A: Need to take ro-ro ships and bulk carriers,or Land transportation.

Q: How long is the delivery time for the concrete pump ?

A: The delivery time is generally about 30 days.

Q: What is the condition of this used concrete pump truck?

A: It's excellent.



Hunan Zhongheng Machinery Co., Ltd.



+8613657401111



shawn@hnhzmachinery.com



hnhzmachinery.com

Building B, Shijing International Plaza, Dongliu Road, Changsha Economic and Technological Development Zone, Hunan Province