

Zoomlion ZLJ523131THBKF 38X-5RZ Boom Concrete Pump Truck 38M Used 2024 Year with 5 Boom Sections for sale

Our Product Introduction

for more products please visit us on hnhzmachinery.com

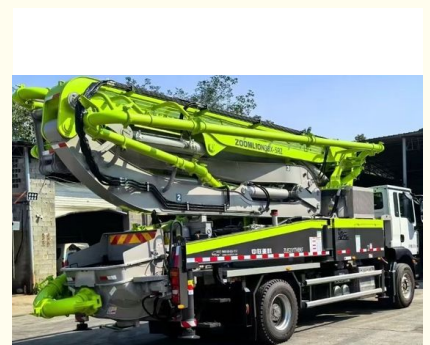
Basic Information

- Place of Origin: China
- Brand Name: ZOOMLION
- Model Number: ZLJ5231THBKF 38X-5RZ
- Minimum Order Quantity: 1
- Price: Negotiable
- Packaging Details: N/A
- Delivery Time: 10days
- Payment Terms: L/C,T/T
- Supply Ability: 10/unit/month



Product Specification

- Model: ZLJ5231THBKF
- Made Year: 2024
- Number Of Axles: 3 Axles
- Boom Section: 5
- Engine Power: 300/1800
- Chassis: SITRAK
- Factory Location: Changsha, China
- Machining Process: Hydraulic
- Highlight: 2024 Year Used Concrete Pump Truck,
38X-5RZ Used Concrete Pump Truck,
ZLJ523131THBKF



More Images



Product Description

Product Description:

Active shock absorption technology for boom, good stability.

After strict assessment by a professional dynamic load fatigue test bench, the fatigue life of the main structure of the boom/base frame has been verified to be 8 years or 450,000 cubic meters.

Through-axle design and external connecting rod design, small lateral shaking, high strength/rigidity, safe and reliable.

High-precision and high-efficiency pumping system uses a displacement sensor to constantly detect the position of the concrete piston.

The single-time discharge of a full cylinder is large, and the pumping efficiency is 5-8% higher than the industry.

Integrate advanced digital technologies to accurately evaluate and monitor equipment health status, quickly detect equipment anomalies, and remotely resolve on-site problems.

Features:

Product Name:Zoomlion Concrete Pump Truck

Vertical Reach:37.1

Made Year: 2024

Boom Section: 5

Chassis: SITRAK

Factory Location: Changsha, China

Features: Beton Pump, Concrete Pump,ZOOMLION,Concrete Pump Truck

Technical Parameters:

Product Name	Zoomlion Concrete Pump Truck
Model	ZLJ5231THBKF
Condition	New
Emission Standard	China stage VI
Chassis	SITRAK
Number of Axles	3Axles
Boom Section	5
Machining Process	Hydraulic
Application	Construction,subways, Bridges, Large-scale high-rise Buildings, Foundation Construction, Etc.
Port	China Port
Factory Location	Changsha,China

Applications:

The Zoomlion ZLJ5231THBKF has a 5-section boom that provides a maximum vertical reach of 37.1 meters and a horizontal reach of 23.68 meters. This makes it suitable for a wide range of construction projects, including high-rise buildings, bridges, and tunnels. One of the main advantages of the Zoomlion ZLJ5231THBKF truck-mounted concrete pump is its mobility. It can easily navigate through narrow streets and tight corners, making it ideal for urban construction sites. It can also be used in remote locations where access is limited, such as mining sites and oil rigs.

The Zoomlion ZLJ5231THBKF concrete pump truck is suitable for various applications, including pouring concrete for foundations, walls, and columns. It can also be used for concrete pumping in precast factories, tunnel construction, and for repairing damaged concrete structures.

Construction companies that require high-quality and efficient concrete pumping services can benefit from using the Zoomlion ZLJ5231THBKF. Its 6-section boom allows it to reach almost any height or distance, making it a valuable asset for any construction project.

In summary, the Zoomlion ZLJ5231THBKF is a reliable and efficient truck-mounted concrete pump that can be used in various construction scenarios.



Packing and Shipping:

Product Packaging:

None

Shipping:

The used concrete pump truck will be shipped via a reliable carrier service.

The carrier service will be responsible for delivering the crate to the specified address.

Shipping fees will be calculated and charged based on the destination and weight of the crate.

The estimated delivery time will be provided once the order is confirmed.

SHIPPING PICTURES



FAQ:

Q: What is the brand name of this used concrete pump truck?

A: The brand name of this used concrete pump truck is ZOOMLION.

Q: What is the model number of this used concrete pump truck?

A: The model number of this used concrete pump truck is ZLJ5231THBKF 38X-5RZ.

Q: Where is this concrete pump truck made?

A: This used concrete pump truck is made in China.

Q: What is the condition of this concrete pump truck?

A: It's a new pump truck, please contact us for more information.

Q: Does this used concrete pump truck come with any warranty?

A: We do not provide any warranty for this used concrete pump truck. However, we can provide you with maintenance and repair services online.



Hunan Zhongheng Machinery Co., Ltd.



+8613657401111



shawn@hnhzmachinery.com



hnhzmachinery.com

Building B, Shijing International Plaza, Dongliu Road, Changsha Economic and Technological Development Zone, Hunan Province