

Zoomlion 59M Old Concrete Pump Truck , 2020 Used Cement Boom Pump Truck

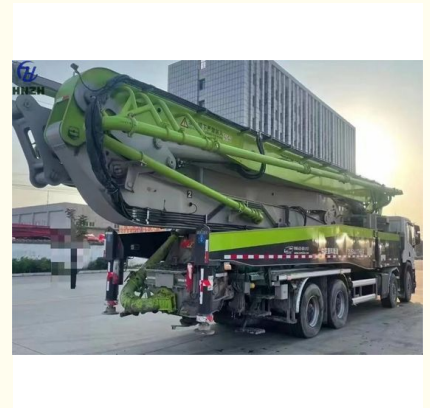
Basic Information

- Place of Origin: China
- Brand Name: ZOOMLION
- Model Number: ZLJ5441THBSE 59X-6RZ
- Minimum Order Quantity: 1 Unit
- Price: Negotiable
- Packaging Details: N/A
- Delivery Time: 10days
- Payment Terms: L/C, T/T
- Supply Ability: 10/unit/month



Product Specification

- Model: ZLJ5441THBSE
- Made Year: 2020
- Vertical Reach: 58.1m
- Cabin: SITRAK
- Boom Section: 6
- Emission Standard: China Stage VI
- Overall Dimension(mm): 14035*2550*4000
- GVW (Kg): 43870
- Highlight: 59M Cement Boom Pump Truck, 2020 2nd hand pump truck



More Images



Our Product Introduction

for more products please visit us on hnhzmachinery.com

Product Description

Product Description:

This concrete pump truck comes with six boom sections that provide excellent flexibility and reach. It is designed to handle various construction tasks, including subways, bridges, large-scale high-rise buildings, foundation construction, and many more. Its hydraulic machining process ensures smooth and efficient operation, making it ideal for any construction site.

The Used Concrete Pump Truck is an ideal machine for concrete pumping. It is equipped with a reliable and efficient beton pump that delivers high-quality concrete with precision and accuracy. With this truck-mounted concrete pump, you can easily transport concrete to any construction site, making your job easier and more efficient.

This concrete pump truck is designed to provide excellent performance and reliability, even in the most demanding construction environments. It is built with high-quality materials and advanced technology to ensure its longevity and durability. With its powerful engine, flexible boom sections, and efficient beton pump, you can be sure that this concrete pump truck will meet all your construction needs.

In summary, the Used Concrete Pump Truck is a versatile and reliable machine that is perfect for various construction applications. It is equipped with a powerful engine, six boom sections, and an efficient beton pump that delivers high-quality concrete with precision and accuracy. Its hydraulic machining process ensures smooth and efficient operation, making it ideal for any construction site. So, if you are looking for a reliable and efficient concrete pump truck for your next construction project, this is the perfect machine for you.

Features:

Product Name: Used concrete boom pump

Number Of Axles: 4Axles

Model: ZLJ5441THBSE 59X-6RZ

Chassis: SIKRAK

Features: Beton Pump, Truck-mounted Concrete Pump, Concrete Pump Truck, Used concrete boom pump

Technical Parameters:

Product Attribute	Value
Product	Used concrete pump truck
Brand	ZOOMLION
Model	ZLJ5441THBSE 59X-6RZ
Chassis	SITRAK
Engine Power	305/1800Kw/rpm
Machining Process	Hydraulic
Vertical Reach	58.1
Boom Section	6
Factory Location	Changsha, China
Made Year	2020
Drive mode	8*4
Emissionstandard	China stage6
GVW (Kg)	43870
Hydraulic System	Open
Working Hours	3108h

Applications:

Water conservancy and hydropower, subways, bridges, large-scale infrastructure construction, high-rise buildings, foundation construction, etc.



Packing and Shipping:

Product Packaging:

The used concrete pump truck will be securely wrapped and packaged in a protective covering to prevent any damage during transport. All necessary components and accessories will be included and properly secured within the packaging.

Shipping:

We offer both domestic and international shipping options for our used concrete pump truck.

Once your order is processed and confirmed, we will arrange for prompt shipment to your desired location.

Shipping fees will be calculated based on your location and will be added to your total purchase price at checkout.

Please allow for standard shipping times based on your location and shipping method selected.

FAQ:

Q: What is the brand name of this concrete pump truck?

A: The brand name of this concrete pump truck is ZOOMLION.

Q: What's the terms of payment?

A: 30% Advanced Payment T/T ,70% Balance Before Delivery To China Port .

Q: How to transport the pump truck to the address ?

A: Need to take ro-ro ships and bulk carriers,or Land transportation.

Q: How long is the delivery time for the concrete pump ?

A: The delivery time is generally about 30 days.

Q: What is the condition of this used concrete pump truck?

A:It's excellent.



Hunan Zhongheng Machinery Co., Ltd.



+8613657401111



shawn@hnhzmachinery.com



hnhzmachinery.com

Building B, Shijing International Plaza, Dongliu Road, Changsha Economic and Technological Development Zone, Hunan Province