

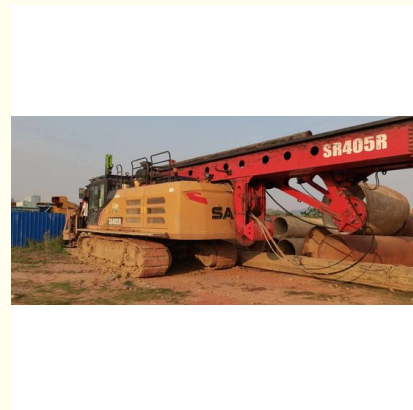
Sany SR405R 2020 Used Well Drilling Rig 405KN 377KW Second Hand Drilling Machine

Our Product Introduction

for more products please visit us on hnhzmachinery.com

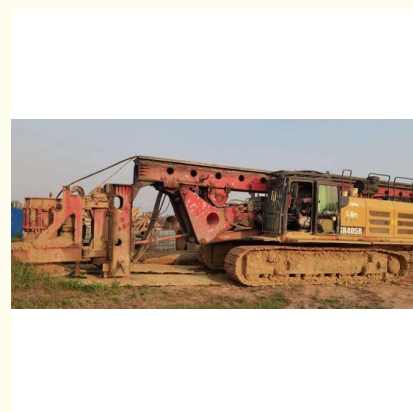
Basic Information

- Place of Origin: CHINA
- Brand Name: SANY
- Model Number: SR405R
- Minimum Order Quantity: 01UNIT
- Price: Negotiate
- Packaging Details: Containers, RORO ship, Cargo bulk ship
- Delivery Time: 25 Days After Down Payment
- Payment Terms: L/C, T/T
- Supply Ability: 10/unit/month

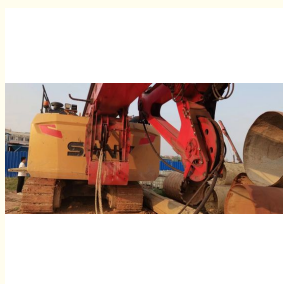


Product Specification

- Brand: Sany
- Manufacture: 2020
- Torque: 405KN
- Engine: Isuzu 6WG1
- Dimensions W*H*L: 3500*3660*20110
- Year: 2020
- Worked Hour: 5600H
- Max. Sped: 70m/min
- Highlight: Used SR405R Sany Rotary Drilling Rig, 2020 Sany Second Hand Drilling Machine, 70m/Min Used Well Drilling Rig



More Images



Product Description

Sany SR405R 2020 Used Rotary Drilling Rig 5~ 24 Rpm ,377KW

| Product Discription | | | |
|-------------------------------------|---------------------|--------|------------|
| Used Rotary Drilling Rig SR360R-H10 | | Unit | Parameter |
| Pile | Max.Pile diameter | mm | 2500 |
| | Max. Pile depth | m | 106/85 |
| Rotary Drive | Rated output torque | KN-m | 405 |
| | Rated Speed | rpm | 5~25 |
| Crowd System | Crowd Force | KN | 350 |
| | Line Pull | KN | 400 |
| | Stroke | mm | 13000 |
| Main Winch | Lifting Capacity | KN | 400 |
| | Ripe Diameter | mm | 36 |
| | Max. line speed | m/min | 75 |
| Main Chassis | Base Engine | | Isuzu 6WG1 |
| | Engine power | KW/RPM | 300/1800 |
| | Emission | | Euro III |
| Overall | Overall height | mm | 3660 |
| | Operating weight | kg | 131000 |
| | Transport Width | mm | 3500 |
| | Transport Height | mm | 20110 |



Hunan Zhongheng Machinery Co., Ltd.



+8613657401111



shawn@hnhzmachinery.com



hnhzmachinery.com

Building B, Shijing International Plaza, Dongliu Road, Changsha Economic and Technological Development Zone, Hunan Province