

## Sany SR360R 2019 Used Geotechnical Drilling Rigs 24Rpm with Isuzu 6WG1 Engine

Our Product Introduction

for more products please visit us on [hnhzmachinery.com](http://hnhzmachinery.com)

### Basic Information

- Place of Origin: CHINA
- Brand Name: SANY
- Model Number: SR360R
- Minimum Order Quantity: 01UNIT
- Price: Negotiable
- Packaging Details: Containers, RORO ship, Cargo bulk ship
- Delivery Time: 25 Days After Down Payment
- Payment Terms: L/C, T/T
- Supply Ability: 10/unit/month

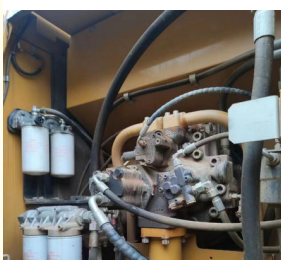


### Product Specification

- Name: Used Geotechnical Drilling Rigs
- Brand: Sany
- Manufacture: 2019
- Engine: Isuzu 6WG1
- Worked Hours: 660H
- Condition: Used
- MMax.height: 26365mm
- Max.diameter: 2500mm
- Emission: Eur III
- Highlight: Sany SR360R Used Geotechnical Drilling Rigs, 2019 Sany Used Geotechnical Drilling Rigs, 6WG1 Engine Used Drilling Rig



### More Images



## Product Description

### Sany SR360R 2019 Used Geotechnical Drilling Rigs 24Rpm with Isuzu 6WG1 Engine

Sany Used Rotary Drilling Rig SR360H Model 2019			
Product Discription		Unit	Parameter
Pile	Max.Pile diameter	mm	2500
	Max. Pile depth	m	100/65
Rotary Drive	Rated output torque	KN-m	360
	Rated Speed	rpm	5~24
Crowd System	Crowd Force	KN	290
	Line Pull	KN	335
	Stroke	mm	6000
Main Winch	Lifting Capacity	KN	360
	Wire rope diameter	mm	36
	Max. line speed	m/min	75
Main Chassis	Base Engine	ISUZU 6WG1	
	Engine power	KW	300
	Emission Standard	Tier III	
Overall	Operating dimension Length	mm	19910
	Operating dimension width	mm	3530
	Operating dimension height	mm	3745
	Operating weight	kg	105000



**Hunan Zhongheng Machinery Co., Ltd.**



+8613657401111



[shawn@hnzhmachinery.com](mailto:shawn@hnzhmachinery.com)



[hnzhmachinery.com](http://hnzhmachinery.com)

Building B, Shijing International Plaza, Dongliu Road, Changsha Economic and Technological Development Zone, Hunan Province