

SANY SR360E 2021 Used Rotary Drilling Rig machine 300KW

Our Product Introduction

for more products please visit us on hnhzmachinery.com

Basic Information

- Place of Origin: China
- Brand Name: SANY
- Model Number: SR360H
- Minimum Order Quantity: 01Unit
- Price: Negotiable
- Packaging Details: RORO ship, Cargo bulk ship
- Delivery Time: 25--35Day After Downpayment
- Payment Terms: T/T, L/C, D/A, D/P
- Supply Ability: 10Units/Month

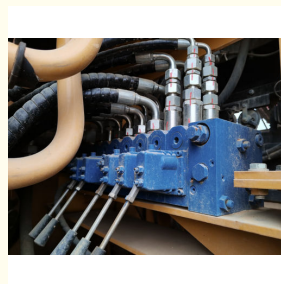
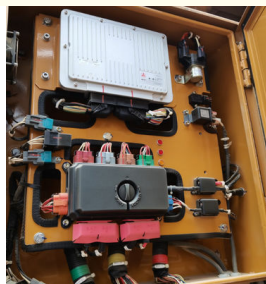
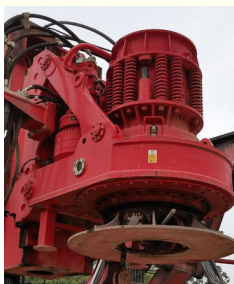


Product Specification

- Model: SR360E
- Engine Mode: ISUZU 6WG1
- Brand: SANY
- Worked Hours: 1895
- Operating Mass: 105000Kg
- Engine Power: 300KW
- Conditions: Used
- Year: 2021
- Highlight: SR360E Used Rotary Drilling Rig,
2021 Used Rotary Drilling Rig,
Used Rotary Drilling Rig 300KW



More Images



Product Description

SANY SR360E 2021 Used Rotary Drilling Rig 5~ 24 Rpm ,300KW

Sany Used Rotary Drilling Rig SR360E Model 2021			
Product Discription		Unit	Parameter
Pile	Max.Pile diameter	mm	2500
	Max. Pile depth	m	100/65
Rotary Drive	Rated output torque	KN-m	360
	Rated Speed	rpm	5~24
Crowd System	Crowd Force	KN	275/335
	Line Pull	KN	330/90
	Stroke	mm	6000
Main Winch	Lifting Capacity	KN	335
	Wire rope diameter	mm	36
	Max. line speed	m/min	20
Main Chassis	Base Engine	ISUZU 6WG1	
	Engine power	KW	300
	Emission Standard	Tier III	
Overall	Operating dimension Length	mm	9595
	Operating dimension width	mm	4760
	Operating dimension height	mm	26395
	Operating weight	kg	105000



Hunan Zhongheng Machinery Co., Ltd.

+8613657401111

shawn@hnzhmachinery.com

hnzhmachinery.com

Building B, Shijing International Plaza, Dongliu Road, Changsha Economic and Technological Development Zone, Hunan Province