



SANY SR285 2017 Used Rotary Drilling Rig 300KW Used Rock Drilling Equipment

Our Product Introduction

for more products please visit us on hnhzmachinery.com

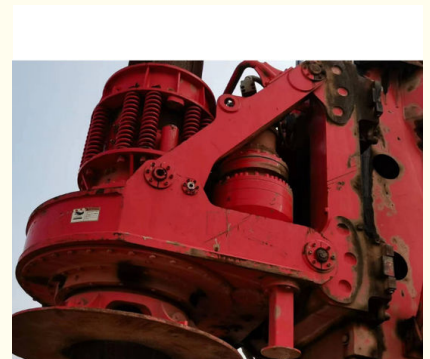
Basic Information

- Place of Origin: China
- Brand Name: SANY
- Model Number: SR285R
- Minimum Order Quantity: 01Unit
- Price: Negotiable
- Packaging Details: RORO ship, Cargo bulk ship
- Delivery Time: 25--35Day After Downpayment
- Payment Terms: T/T, L/C, D/A, D/P
- Supply Ability: 10Units/Month

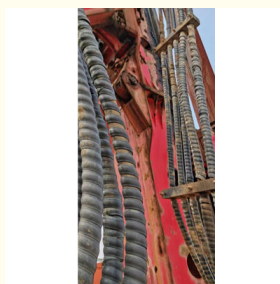
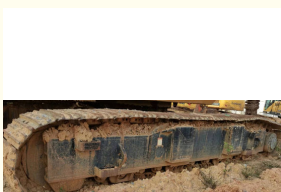


Product Specification

- Name: SANY Used Rotary Drilling Rig
- Brand: SANY
- Model: SR285R 2017
- Engine Power: 300KW
- Operating Mass: 100000Kg
- Worked Hours: 6800
- Conditions: Used
- Engine Mode: ISUZU 6WG1
- Year: 2017
- Highlight: SANY SR285 Used Rotary Drilling Rig,
2017 Used Rotary Drilling Rig,
300KW Used Rock Drilling Equipment



More Images



Product Description

SANY SR285 2017 Used Rotary Drilling Rig 5~ 24 Rpm ,300KW

Sany Used Rotary Drilling Rig SR285R Model 2017			
Product Discription		Unit	Parameter
Pile	Max.Pile diameter	mm	2200/1900
	Max. Pile depth	m	93.5/61
Rotary Drive	Rated output torque	KN-m	285
	Rated Speed	rpm	5~24
Crowd System	Crowd Force	KN	260/334
	Line Pull	KN	330
	Stroke	mm	17100
Main Winch	Lifting Capacity	KN	
	Wire rope diameter	mm	20
	Max. line speed	m/min	70
Main Chassis	Base Engine	ISUZU 6WG1	
	Engine power	KW	300
	Emission Standard	Tier III	
Overall	Operating dimension Length	mm	9496
	Operating dimension width	mm	4740
	Operating dimension height	mm	25423
	Operating weight	kg	100000



Hunan Zhongheng Machinery Co., Ltd.



+8613657401111



shawn@hnzhmachinery.com



hnzhmachinery.com

Building B, Shijing International Plaza, Dongliu Road, Changsha Economic and Technological Development Zone, Hunan Province