



SANY SR360H 2018 Used Deep Rock Drilling Rigs 300KW 8600 Worked Hours

Our Product Introduction

for more products please visit us on hnhzmachinery.com

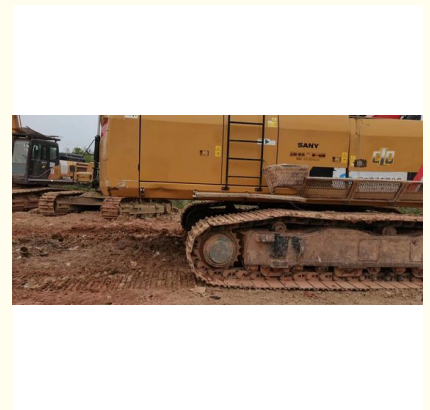
Basic Information

- Place of Origin: China
- Brand Name: SANY
- Model Number: SR360H
- Minimum Order Quantity: 01Unit
- Price: Negotiable
- Packaging Details: RORO ship, Cargo bulk ship
- Delivery Time: 25--35Day After Downpayment
- Payment Terms: T/T, L/C, D/A, D/P
- Supply Ability: 10Units/Month

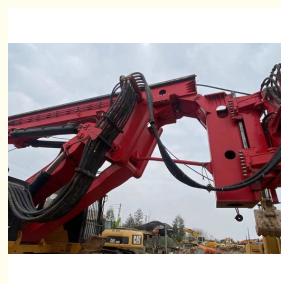
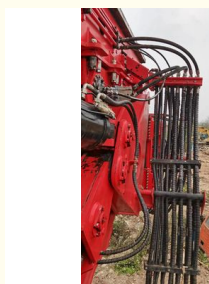


Product Specification

- Brand: SANY
- Engine Power: 300KW
- Engine Mode: ISUZU 6WG1
- Operating Mass: 122000Kg
- Worked Hours: 8600
- Model: SR360H 2018
- Conditions: Used
- Year: 2018
- Highlight: **Used Deep Rock Drilling Rigs 300KW, 2018 Used Deep Rock Drilling Rigs, SANY SR360H Used Drill Rig**



More Images



Product Description

SANY SR360H 2018 Used Rotary Drilling Rig

Sany Used Rotary Drilling Rig SR360H Model 2018			
Product Discription		Unit	Parameter
Pile	Max.Pile diameter	mm	2500
	Max. Pile depth	m	100/65
Rotary Drive	Rated output torque	KN-m	360
	Rated Speed	rpm	5~24
Crowd System	Crowd Force	KN	290/334
	Line Pull	KN	335
	Stroke	mm	6000
Main Winch	Lifting Capacity	KN	335
	Wire rope diameter	mm	36
	Max. line speed	m/min	20
Main Chassis	Base Engine	ISUZU 6WG1	
	Engine power	KW	300
	Emission Standard	Tier III	
Overall	Operating dimension Length	mm	9772
	Operating dimension width	mm	4860
	Operating dimension height	mm	27314
	Operating weight	kg	120000



Hunan Zhongheng Machinery Co., Ltd.



+8613657401111



shawn@hnzhmachinery.com

hnzhmachinery.com

Building B, Shijing International Plaza, Dongliu Road, Changsha Economic and Technological Development Zone, Hunan Province