

SR405R 2020 Year Old Used Rotary Drilling Rig 377 KW For Foundation Construction

Our Product Introduction

for more products please visit us on hnhzmachinery.com

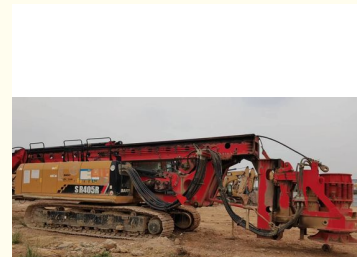
Basic Information

- Place of Origin: China
- Brand Name: SANY
- Model Number: SR405R
- Minimum Order Quantity: 01Unit
- Price: Negotiable
- Packaging Details: RORO ship, Cargo bulk ship
- Delivery Time: 25--35Day After Downpayment
- Payment Terms: T/T, L/C, D/A, D/P
- Supply Ability: 10Units/Month



Product Specification

- Brand: SANY
- Model: SR405R 2020
- Engine Power: 377KW
- Operating Mass: 122000Kg
- Worked Hours: 5800H
- Conditions: Used
- Engine Mode: ISUZU 6WG1
- Year: 2020
- Highlight: Used Rotary Drilling Rig 2020 Year,
SR405R 2020 Used Rotary Drilling Rig,
377 KW Old Rotary Drilling Rig



More Images



Our Product

Product Description

SANY SR405R 2020 Used Rotary Drilling Rig 5~25 Rpm ,377 KW

Sany Used Rotary Drilling Rig SR405R Model 2020		
Product Discription	Unit	Parameter

Pile	Max.Pile diameter	mm	2500/2200
	Max. Pile depth	m	106/87
Rotary Drive	Rated output torque	KN-m	377
	Rated Speed	rpm	5~25
Crowd System	Crowd Force	KN	350
	Line Pull	KN	400
	Stroke	mm	13000
Main Winch	Lifting Capacity	KN	400
	Wire rope diameter	mm	36
	Max. line speed	m/min	75
Main Chassis	Base Engine	ISUZU 6WG1	
	Engine power	KW	377
	Emission Standard	Tier III	
Overall	Overall height	mm	27700
	Operating weight	kg	1200000
	Transport Width	mm	3500
	Transport Height	mm	3660



Hunan Zhongheng Machinery Co., Ltd.



+8613657401111



shawn@hnzhmachinery.com



hnzhmachinery.com

Building B, Shijing International Plaza, Dongliu Road, Changsha Economic and Technological Development Zone, Hunan Province