



Sany Used Concrete Mixer Truck 4 Axle 12 Cubic 2020 Manufacture Old

Our Product Introduction

for more products please visit us on hnhzmachinery.com

Basic Information

- Place of Origin: CHINA
- Brand Name: SANY
- Model Number: SYM1317T1E
- Minimum Order Quantity: 01UNIT
- Price: Negotiate
- Packaging Details: N/A
- Delivery Time: 25 Days After Down Payment
- Payment Terms: L/C, T/T
- Supply Ability: 10/unit/month

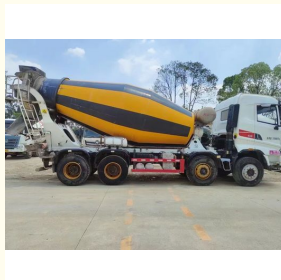


Product Specification

- Name: Second Hand Concrete Mixer Trucks
- Brand: Sany
- Axle: 4
- Capacity: 12 Cubic
- Emission: Eur V
- Manufacture: 2020
- Status: Used
- Highlight: Sany Old Concrete Mixer Trucks,
Used Concrete Mixer Truck 4 Axle,
Used Mixer Truck 2020 Manufacture



More Images



Product Description

Sany used Concrete Mixer Truck 12cubic

Model		SYM1317T1E
Overall Parameters	Rudder	Left
	Curb Weight(kg)	13800
	GVW(kg)	31000
	Dimension (L×H×W)(mm)	10320×2525×3985mm
	Wheel Base(mm)	1700+3200+1350
	Min. Ground Clearance(mm)	
	Min. Turning Diameter(m)	
	Fuel Consumption(L/100km)	
	Braking Distance(V0=30km/h)(m)	
	Engine Model	
Chassis	Displacement(L)	11.596
	Rated Power/Rev Speed(kW/rpm)	251/2200kW/rpm
	Max. Torque/Rev Speed(N.m/rpm)	2060/1000-1400
	Emissions	Euro V
	Gear-box	Fast 9JS150TA-B
	Front Axle(t)	9
	Intermediate, Rear Axle(t)	2×16
	Cab Capacity	2
	Tyre	12.00R20
		Pneumatic dual- circuit braking system with drum
	Fuel Tank Capacity(L)	300
	Agitator Capacity (m3)	7.68
Drum	Feeding Speed(m3/min)	≥8
	Discharge Speed(m3/min)	≥5
	Discharge Residual Rate	≤0.5%
	Slump(mm)	50 210

Our Product Introduction

for more products please visit us on hnhzmachinery.com

	Water Tank Capacity(L)	800
	Water Pressure(MPa)	0.35-0.38
	Reducer	PMP PMB7.1
	Hydraulic Pump	Sany P4VC090NHW
	Motor	Sany M2F090NCWV



Hunan Zhongheng Machinery Co., Ltd.



+8613657401111



shawn@hnhzmachinery.com



hnhzmachinery.com

Building B, Shijing International Plaza, Dongliu Road, Changsha Economic and Technological Development Zone, Hunan Province