

## Sany Truck Mounted Concrete Pump Used Second Hand HBT80C-1818D

Our Product Introduction

for more products please visit us on [hnhzmachinery.com](http://hnhzmachinery.com)

### Basic Information

- Place of Origin: China
- Brand Name: SANY
- Model Number: HBT60C-1816D
- Minimum Order Quantity: 1 Unit
- Price: Negotiable
- Packaging Details: N/A
- Delivery Time: 15-25Days After Downpayment
- Payment Terms: D/A, L/C, D/A, T/T, D/P
- Supply Ability: 10 Units/Month

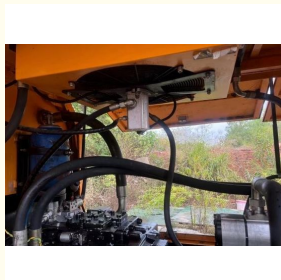
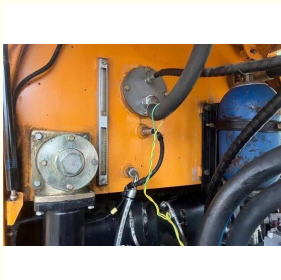


### Product Specification

- Engine: Deutz
- Power: 186KW
- Working Hour: 4000h
- Manufacture: 2017
- Cool Mode: Wind + Water
- Output Theoretical: 80m³/H
- Vertical Height: 150M
- Horizontal Distance: 300M
- Status: Refurbished
- Function: All Function Normal
- Highlight: Sany Truck Mounted Concrete Pump Used,  
Sany Concrete Pump Second Hand,  
Sany Stationary Concrete Pump Used



### More Images



## Product Description

HBT80c-1818D is very stability product from sany since 1989 , this pump is very reliable ,status is all function naomally after our engineer professional inspect .

Used Sany Stationary HBT80C1818D pump	
Model	HBT80C1818D
Machine Original	China
Max.output pressure	18Mpa
Engine Brand	Deutz
Cool Mode	water+wind
concrete output Low /High pressure	85/60m³/H
Engine rated power(kw)	186
Rated Rotary Speed (rpm)	2200
Delivery cylinder*Strok(mm)	Φ200X1800mm
Hopper capacity (m3)* Feeding height(mm)	0.7X1420
Dimension (L*W*H) (mm)	7330X2125X2685
Gross weight (kg)	7300
Max. aggregate size: Φ150XΦ125 mm pipe	50/40mm
Valve Type	S-Valve
Slump of concrete (mm)	100 230



**Hunan Zhongheng Machinery Co., Ltd.**



+8613657401111



[shawn@hnhzmachinery.com](mailto:shawn@hnhzmachinery.com)



[hnhzmachinery.com](http://hnhzmachinery.com)

Building B, Shijing International Plaza, Dongliu Road, Changsha Economic and Technological Development Zone, Hunan Province