

## 2017 XCMG Used Concrete Pump Truck 53Meter Old Concrete Boom Pump Truck

Our Product Introduction

for more products please visit us on [hnhzmachinery.com](http://hnhzmachinery.com)

### Basic Information

- Place of Origin: CHINA
- Brand Name: XCMG
- Model Number: HB53V
- Minimum Order Quantity: 1 UNIT
- Price: Negotiatel
- Packaging Details: N/A
- Delivery Time: 25 Days
- Payment Terms: L/C, T/T
- Supply Ability: 10/unit/month

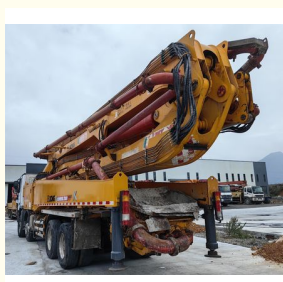
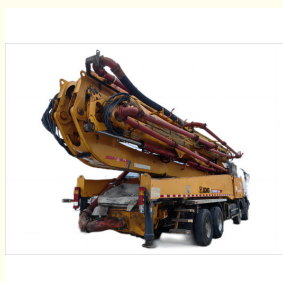


### Product Specification

- Brand: XCMG
- Weight: 37T
- Engine Power: 324kw
- Chassis Brand: Benz
- Output: 180m³/h
- Hydraulic System: Open
- Year: 2017
- Max. Pressure: 10.2Mpa
- Highlight: 900m³/h Used Concrete Pump Truck, 12Mpa Used Concrete Pump Truck, Old Concrete Pump Truck 53Meter



### More Images



## Product Description

### Product Description:

The **Used Concrete Pump Truck** is a powerful and dependable tool for a variety of applications in the construction industry. Manufactured by SANY, this used concrete pump truck features an engine power of 200kw and a weight of 23t, with two pump cylinders. It is a reliable and robust model that can be used for a range of construction projects. The used concrete pump trucks for sale on the market are in great condition and provide a cost-effective alternative to new models. With a variety of used concrete pump trucks for sale near me, you can find the perfect model to suit your needs and budget.

### Features:

**Efficient Concrete Delivery:** Used concrete pump trucks are designed to **optimize** concrete delivery to construction sites, **expediting** and improving the accuracy of concrete placement when compared to traditional methods.

**Extended Reach:** The trucks are outfitted with long booms or arms that allow for extended reach, **permitting** concrete placement in hard-to-reach areas like high-rise buildings or distant construction sites.

**Versatility:** Used concrete pump trucks are **adaptable** for various applications, both residential, commercial, and infrastructure.

**Time and Labor Savings:** Utilizing a concrete pump truck greatly **accelerates** the process of concrete placement and reduces manual labor dependent on the project, resulting in both time and cost savings.

**Improved Concrete Quality:** The use of the concrete pump trucks **certifies** a steady flow and uniform distribution of concrete, **boasting** an improved quality and strength of the finished structure.

**Increased Productivity:** Continuous and efficient concrete pouring enabled by concrete pump trucks promotes overall productivity on the construction site.

**Reduced Site Congestion:** A single concrete pump truck minimizes the necessity for multiple concrete mixers or wheelbarrows on the construction site, alleviating congestion and related safety risks.

**Enhanced Safety:** The need for manual handling of heavy concrete loads is **near-nonexistent** when a concrete pump truck is employed, creating a **safer** environment for employees on the construction site.

**Easy Maneuverability:** Craftily designed for choreographed **navigation**, these trucks can be conveniently maneuvered and repositioned on the construction site for flexible concrete placement, according to project needs.

**Cost-Effective Solution:** Investing in a used concrete pump truck is a **economical** solution for construction companies, as it provides the benefits of a concrete pump at **a fraction** of the cost of purchasing a brand new truck.

### Technical Parameters:

Parameter	Value
Engine Power	324kw
Dimension	13m*2.5m*4m
Year	2017
Manufacturer	XCMG
Pump Cylinder	2.6
Model	HB53V
Original	China
Material	Steel
Capacity	180m3/h
Outrigger	K

### Applications:

**High-rise construction:** Concrete pump trucks are the perfect solution for efficiently delivering concrete to upper floors of tall building projects. Using tower cranes or manual labor can often be impractical, making concrete pump trucks the ideal choice.

**Infrastructure projects:** Concrete pump vehicles provide an invaluable service in transportation infrastructure jobs, such as bridges, overpasses, dams, and roads by making it easier to pour large amounts of concrete.

**Precast/tilt-up construction:** With their economical continuous pour capability, concrete pumps are the go-to choice for high-productivity precast/tilt-up construction projects.

**Industrial/commercial construction:** Large warehouses, factories, and parking structures all benefit from the rapid floor and foundation work enabled by concrete pump trucks.

**Tunneling projects:** Concrete lining for tunnels, underground utility trenches, and subway stations can only be accomplished with concrete pumps, who are capable of pouring concrete in enclosed areas.

**Underground parking:** Concrete pumps make it easy to pour structural floors and ramps in below-grade parking facilities, thanks to their long reaching boom and hose.

**Swimming pools/flatwork:** When it comes to residential projects, like backyard and community pools, concrete pumps are a great option for pouring dense concrete walls and floors.

Remote/rural jobsites: When transit mixer delivery is infeasible due to poor access, used concrete pump trucks bring the task of concrete transport and dispensing to remote and rural job sites.

## Support and Services:

### Technical Support and Service for Used Concrete Pump Truck

At XYZ Corporation, we are committed to providing the best possible technical support and service for our used concrete pump trucks. Our experienced customer service team is available to answer your questions about features, operation, maintenance, and more.

We also offer a variety of online resources to help you learn more about our products and services. Our website has detailed product information, user manuals, and troubleshooting guides to help you get the most out of your used concrete pump trucks. We also have a comprehensive FAQ page to answer your most commonly asked questions.

If you have any questions or concerns about your used concrete pump truck, please contact us. We are available through phone, email, or online chat to help you with any technical issues you may have.

## Packing and Shipping:

### Packaging and Shipping

Used Concrete Pump Truck is securely packaged and shipped in a wooden crate. All components are protected with bubble wrap and/or foam inserts to avoid any damage during transit. The crate is then secured with straps, nails, screws, and/or other fasteners to ensure it remains intact throughout the shipping process.



**Hunan Zhongheng Machinery Co., Ltd.**



+8613657401111



shawn@hnhzmachinery.com



hnhzmachinery.com

Building B, Shijing International Plaza, Dongliu Road, Changsha Economic and Technological Development Zone, Hunan Province