



SANY 2012 Used Concrete Pump Truck 52m 5 Sections With RZ Boom SY5418THB52

Our Product Introduction

for more products please visit us on hnhzmachinery.com

Basic Information

- Place of Origin: CHINA
- Brand Name: SANY
- Model Number: SY5418THB52
- Minimum Order Quantity: 01UNIT
- Price: Negotiate
- Packaging Details: N/A
- Delivery Time: 25 Days
- Payment Terms: L/C, D/A, D/P, T/T, Western Union, MoneyGram
- Supply Ability: 30/unit/month

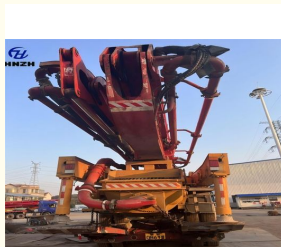
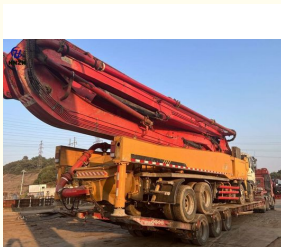


Product Specification

- Name: Used Concrete Boom Pump Truck
- Brand: Sany
- Produce Date: 2012
- Boom Length: 52m
- Boom Section: 5
- Chassis: Isuzu
- Emission: Eur III
- Oil Pump: Rexroth
- Boom Pump: Hawei
- Highlight: **SANY Used Concrete Pump Truck, Used Concrete Pump Truck 52m, 2012 Used Concrete Boom Trucks**



More Images



Product Description

2012 MODE SY5418THB52

2012 Year concrete pump SY5418THB52, with Benz chassis, manufacture 2012. 6 sections with RZ boom , all function is normally , perfect condition with attractive price. Dont hesitate just contact with us .

2012 mode SY5418THB 52	
Product Brand	Sany
Chassis Model	Benz Actros 4141 8*4
MaxVertical Reach(m)	52
Max Horizontal Reach(m)	43
Reach Depth(m)	36.6m
Weight (kg)	41000
Dimension(L*W*H) mm	13760*2500*4000
Boom Section	5
Manufacture Year	2012
Max Theoretical Output	140m³/H
Max/Min Outpressure	12/8Mpa
Engine Type	6WFID
Engine Power	287KW
Rotation	±360°
Axle	4
Max.Speed(km/h)	90
Chassis Fuel Tank Capacity(L)	360



Hunan Zhongheng Machinery Co., Ltd.



+8613657401111



shawn@hnhzmachinery.com



hnhzmachinery.com

Building B, Shijing International Plaza, Dongliu Road, Changsha Economic and Technological Development Zone, Hunan Province