



## 2013 Refurbished Concrete Pumps 4 Axle 56m Used Concrete Boom Pump

### Basic Information

- Place of Origin: CHINA
- Brand Name: SANY
- Model Number: SY5419THB 56C-8
- Minimum Order Quantity: 1 UNIT
- Price: Negotiate
- Packaging Details: N/A
- Delivery Time: 25 Days
- Payment Terms: L/C, T/T
- Supply Ability: 30/unit/month

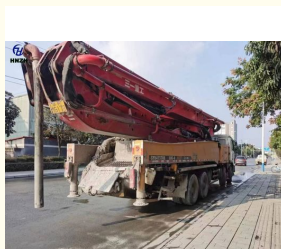


### Product Specification

- Brand: Sany
- Boom Length: 56M
- Chassis: Benz
- Axle: 4
- Emission: Eur III
- Section: 6
- Main Oil Pump: Rexroth
- Delivery Cylinder: 260mm/2100mm
- Highlight: **2013 Refurbished Concrete Pumps, Refurbished Concrete Pumps 4 Axle, 56m Used Concrete Boom Pump**



### More Images



## Product Description

2013mode Sany 56m Concrete Pump

Used sany concrete pump SY5419THB560C-8, with Benz chassis, manufacture 2013 . 6 sections with RZ boom , all function is normally ,perfect condition with attractive price .

Product Discription	
Product Brand	Sany
Chassis Model	Actros 4141 8*4
MaxVertical Reach(m)	56m
Max Horizontal Reach(m)	51m
Reach Depth(m)	36.6
Weight (kg)	41460
Dimension(L*W*H) mm	13850*2500*3990
Boom Section	6
Manufacture Year	2013
Max Theoretical Output	180m³/H
Max Outpressure	12Mpa
Engine Type	OM501LA.V/4
Pumping Oil Tank Capacity(L)	610
Water Tank Capacity(L)	600
Min.Unfolded Reach(m)	15.2
Max.Speed(km/h)	90
Chassis Fuel Tank Capacity(L)	390



**Hunan Zhongheng Machinery Co., Ltd.**



+8613657401111



[shawn@hnhzmachinery.com](mailto:shawn@hnhzmachinery.com)



[hnhzmachinery.com](http://hnhzmachinery.com)

Building B, Shijing International Plaza, Dongliu Road, Changsha Economic and Technological Development Zone, Hunan Province